

CAS No. 127-42-4

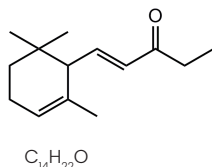
# Methyl Ionone alpha

WOODY FLORAL VIOLET ORRIS

Woody  **<50%**  
Biobased  **NOT**  
Assessed

## CHEMICAL STRUCTURE

1-(2,6,6-Trimethylcyclohex-2-enyl)pent-1-en-3-one



## SYNONYM

[R-(E)]-1-(2,6,6-Trimethyl-2-cyclohexen-1-yl)pent-1-en-3-one

## APPLICATION INFORMATION

Used in many floral fragrances, particularly violet. Blends with and supports woody and leathery notes, also violet, fruit, berry, and nut flavors.

## OCCURRENCE IN NATURE

Not found in nature.

## STABILITY

Fine Fragrance	-	GOOD
Fabric Softener	pH 3	GOOD
Antiperspirants	pH 3.5	GOOD
Toiletry Applications	pH 6	GOOD
Liquid Detergent	pH 9	GOOD
Soaps	pH 10	GOOD
Powder Detergent	pH 11	GOOD
Bleach	pH 14	POOR

## SUBSTANTIVITY

Skin	GOOD
Dry Fabric	GOOD
Wet Fabric	GOOD
Hair	GOOD

## TENACITY ON BLOTTER

00 HOURS	00 DAYS	>01 WEEKS
-------------	------------	--------------

## BLOOM DIFFUSIVITY

FAIRY DIFFUSIVE

## TYPICAL USE LEVEL

Up to 10%

## TECHNICAL DATA

Flash Point °C	118°C
GC	85% min. isomers
CAS No.	127-42-4 (majority product)
FEMA / GRAS No.	2711
CLogP	4.78

Optical Rotation	-
Appearance	Pale yellow liquid
Molecular Weight	206.33
Vapor Pressure	0.868 Pa at 25°C