



CAS No. 128-50-7

Nopol T

PINE CAMPHOROUS CITRUS WOODY

Pine



≥75%

Biobased



NOT

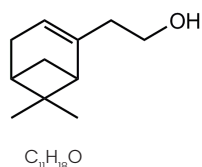
Readily



ISO 16128

CHEMICAL STRUCTURE

2-(6,6-Dimethylbicyclo[3.1.1]hept-2-en-2-yl)ethanol



SYNONYM

Nopol

APPLICATION INFORMATION

Used in fragrances and compositions. Gives a clean note for soaps and detergents.

OCCURRENCE IN NATURE

Not found in nature.

STABILITY

Fine Fragrance	-	GOOD
Fabric Softener	pH 3	GOOD
Antiperspirants	pH 3.5	GOOD
Toiletry Applications	pH 6	GOOD
Liquid Detergent	pH 9	GOOD
Soaps	pH 10	GOOD
Powder Detergent	pH 11	POOR
Bleach	pH 14	POOR

SUBSTANTIVITY

Skin	FAIR
Dry Fabric	FAIR
Wet Fabric	FAIR
Hair	FAIR

TENACITY ON BLOTTER

>24 HOURS	00 DAYS	00 WEEKS
--------------	------------	-------------

BLOOM DIFFUSIVITY

FAIRY DIFFUSIVE

TYPICAL USE LEVEL

Up to 10%

TECHNICAL DATA

Flash Point °C	108°C
GC	97% min. as Nopol
CAS No.	128-50-7
FEMA / GRAS No.	3938
CLogP	3.29

Optical Rotation	-
Appearance	Colorless to pale yellow liquid
Molecular Weight	166.27
Vapor Pressure	0.632 Pa at 25°C