



CAS No. 70788-30-6

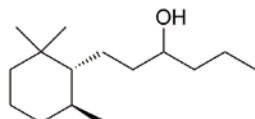
Chiraroma®
Dextramber®

AMBER WOODY DRY POWERFUL



CHEMICAL STRUCTURE

Cyclohexanepropanol, 2,2,6-trimethyl-alpha-propyl

C₁₅H₃₀O

SYNONYM

-

APPLICATION INFORMATION

An exceptionally powerful amber woody note, complemented by a dry clean facet and a touch of animalic warmth reminiscent of androstenol.

OCCURRENCE IN NATURE

Not found in nature.

STABILITY

Fine Fragrance	-	GOOD
Fabric Softener	pH 3	GOOD
Antiperspirants	pH 3.5	GOOD
Toiletry Applications	pH 6	GOOD
Liquid Detergent	pH 9	GOOD
Soaps	pH 10	GOOD
Powder Detergent	pH 11	GOOD
Bleach	pH 14	FAIR

SUBSTANTIVITY

Skin	FAIR
Dry Fabric	FAIR
Wet Fabric	GOOD
Hair	FAIR

TENACITY ON BLOTTER

00 HOURS	00 DAYS	>04 WEEKS
-------------	------------	--------------

BLOOM DIFFUSIVITY

DIFFUSIVE

TYPICAL USE LEVEL

Up to 1%

TECHNICAL DATA

Flash Point °C	100°C
GC	98% min. as sum of isomers
CAS No.	70788-30-6
FEMA / GRAS No.	-
CLogP	5.80

Optical Rotation	7.0° to 17.0°
Appearance	Colorless to pale yellow liquid
Molecular Weight	226.4
Vapor Pressure	0.0127 Pa at 25°C