



CAS No. 18172-67-3

Pinene beta

PINE WOODY LIME DRY

Pine

100%
Biobased

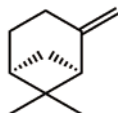
Partially

ISO 16128

Nature
Identical

CHEMICAL STRUCTURE

(1S,5S)-6,6-Dimethyl-2-methylenebicyclo[3.1.1]heptane

 $C_{10}H_{16}$

SYNONYM

(-)-Pin-2(10)-ene

APPLICATION INFORMATION

Used in flavor formulation with citrus or tropical fruit notes.

OCCURRENCE IN NATURE

Found in turpentine and other essential oils such as lemon, nutmeg, hyssop, coriander and cumin seed.

STABILITY

Fine Fragrance	-	GOOD
Fabric Softener	pH 3	GOOD
Antiperspirants	pH 3.5	FAIR
Toiletry Applications	pH 6	FAIR
Liquid Detergent	pH 9	FAIR
Soaps	pH 10	GOOD
Powder Detergent	pH 11	POOR
Bleach	pH 14	POOR

SUBSTANTIVITY

Skin	POOR
Dry Fabric	POOR
Wet Fabric	POOR
Hair	POOR

TENACITY ON BLOTTER

>02 HOURS	00 DAYS	00 WEEKS
--------------	------------	-------------

BLOOM DIFFUSIVITY

FAIRY DIFFUSIVE

TYPICAL USE LEVEL

1% to 10%

TECHNICAL DATA

Flash Point °C	43°C
GC	98% min. as Pinene beta
CAS No.	18172-67-3
FEMA / GRAS No.	-
CLogP	4.35

Optical Rotation	-
Appearance	Colorless to pale yellow liquid
Molecular Weight	136.24
Vapor Pressure	334 Pa at 25°C